



# Virginia Healthcare Workforce Briefs

Indicators from the Bureau of Labor Statistics'  
Current Employment Statistics Survey  
**Series 2: Regional & Sectoral Employment**

Series 2, Issue 118

January 2022

## Inside this Brief:

Regional Employment	2
Regional Employment Growth	3
Subsector Employment	3
Subsector Employment Growth	4
Region Map	5
About the Data	6

## Highlights

- ◆ Data in this series are not seasonally adjusted and exhibit short-term volatility from fluctuations in holidays, weekends, weather and other seasonal factors. Estimates for the most recent month are preliminary.
- ◆ Northern Virginia and Richmond both experienced small gains in Health Care & Social Assistance (HC&SA) employment in December. Northern Virginia's HC&SA sector created 300 new jobs, a gain that represents a one-month annualized growth rate of 2.6%. At the same time, Richmond's HC&SA sector added 100 new jobs, which translates into a 1.4% annualized growth rate. On the other hand, the Rest of Virginia and Hampton Roads lost 2,100 and 1,200 HC&SA jobs, respectively, in December.
- ◆ Every HC&SA subsector in the state lost jobs in December. Hospitals experienced the largest decline in employment as this HC&SA subsector lost 1,000 jobs during the month. Social Assistance and Ambulatory Health Care Services also experienced significant employment losses. Social Assistance lost 900 jobs in December, while Ambulatory Health Care Services saw employment fall by 800 during the month. Meanwhile, Nursing & Residential Care Facilities lost 200 jobs in December.

*Data in this report are not seasonally adjusted. Self-employed persons, including health professionals in private practice, are not included.*

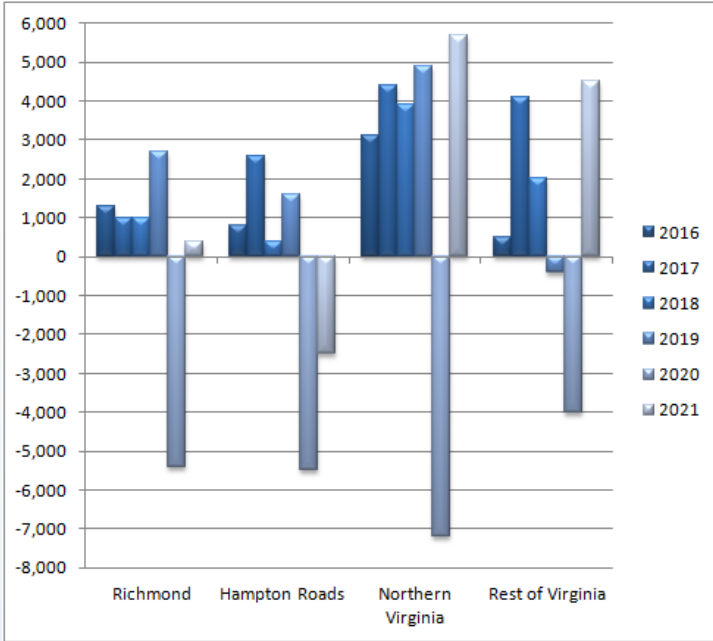
## Data in Brief

Not Seasonally Adjusted*	Employment, in Thousands				Growth Rate, Annualized		
	Dec. 2020	Sept. 2021	Nov. 2021	Dec. 2021	12 Month	3 Month	1 Month
<b>Virginia</b>							
Total Nonfarm	3,894.2	3,940.8	4,012.1	4,010.6	3.0%	7.3%	-0.4%
Health Care & Social Assistance	442.1	446.9	453.1	450.2	1.8%	3.0%	-7.4%
<b>Hampton Roads</b>							
Total Nonfarm	763.4	763.4	770.1	772.3	1.2%	4.7%	3.5%
Health Care & Social Assistance	92.1	88.7	90.8	89.6	-2.7%	4.1%	-14.8%
<b>Northern Virginia</b>							
Total Nonfarm	1,459.7	1,492.3	1,522.2	1,517.2	3.9%	6.8%	-3.9%
Health Care & Social Assistance	133.7	139.6	139.1	139.4	4.3%	-0.6%	2.6%
<b>Richmond</b>							
Total Nonfarm	654.3	648.1	655.7	658.1	0.6%	6.3%	4.5%
Health Care & Social Assistance	83.6	83.7	83.9	84.0	0.5%	1.4%	1.4%
<b>Rest of Virginia</b>							
Total Nonfarm	1,016.8	1,037.0	1,064.1	1,063.0	4.5%	10.4%	-1.2%
Health Care & Social Assistance	132.7	134.9	139.3	137.2	3.4%	7.0%	-16.7%

Preliminary estimates are italicized

\*Seasonally adjusted data are adjusted by the Bureau of Labor Statistics to account for weather and other seasonal changes. Since the U.S. Bureau of Labor Statistics does not provide seasonally adjusted data at this level, this series uses non-seasonally adjusted data exclusively. Seasonal variation may account for some of the variation in time series data. When comparing data in this series to other HWDC series or other publications it is important to note whether the data reported have been seasonally adjusted.

### Regional HC&SA Employment Growth, Level



**Figure 1: Annual & YTD Change in HC&SA Regional Employment (Not Seasonally Adjusted, Full-Year Change for 2016-2020, Year-to-Date Change for 2021).**

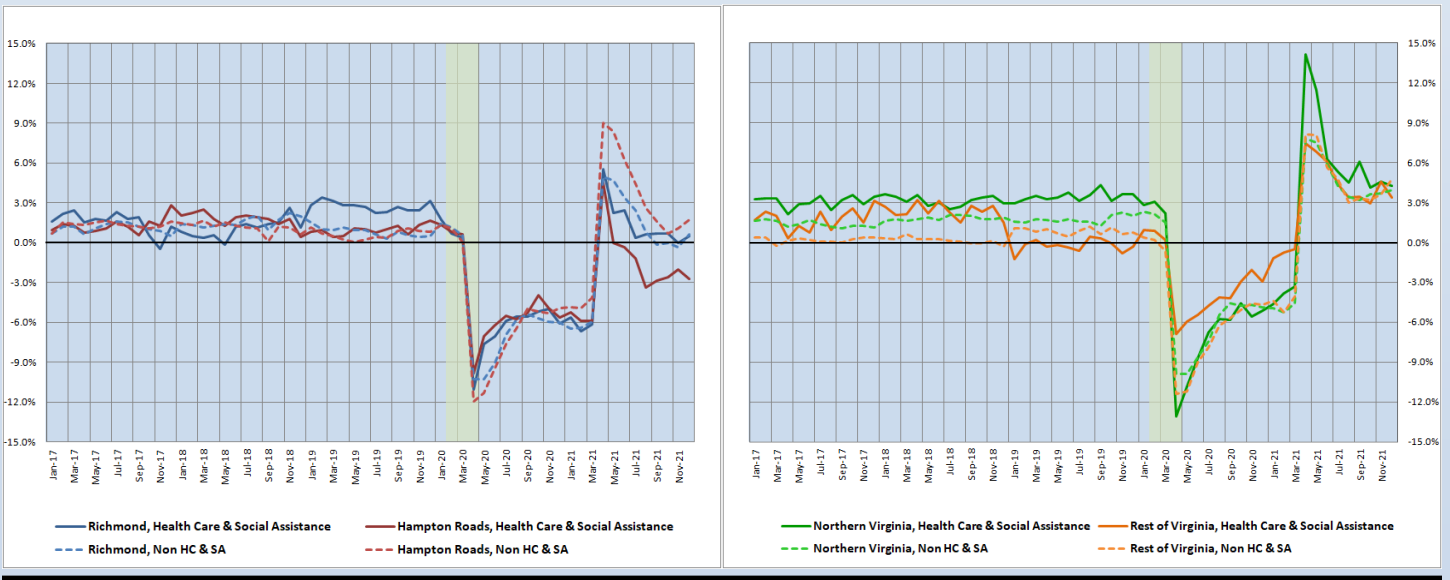
According to the preliminary data released on Tuesday, January 25, 2022, by the U.S. Department of Labor, Bureau of Labor Statistics, both Northern Virginia and Richmond enjoyed small gains in Health Care & Social Assistance (HC&SA) employment in December. Northern Virginia’s HC&SA sector created 300 new HC&SA jobs in December, while Richmond increased HC&SA employment by 100 during the month. However, these gains were erased by larger employment losses in the Rest of Virginia and Hampton Roads. These two regions lost 2,100 and 1,200 HC&SA jobs respectively, in December.

In 2021, both Northern Virginia and the Rest of Virginia enjoyed their largest full-year employment gains since 2015. Northern Virginia’s HC&SA sector created 5,700 jobs in 2021, while the Rest of Virginia added 4,500 HC&SA jobs over the past year. At the same time, Richmond’s HC&SA sector increased employment by 400. Only Hampton Roads failed to experience any job market recovery in its HC&SA sector over the past year as this region lost 2,500 HC&SA jobs in 2021.

### Year-Over-Year Regional Employment Growth

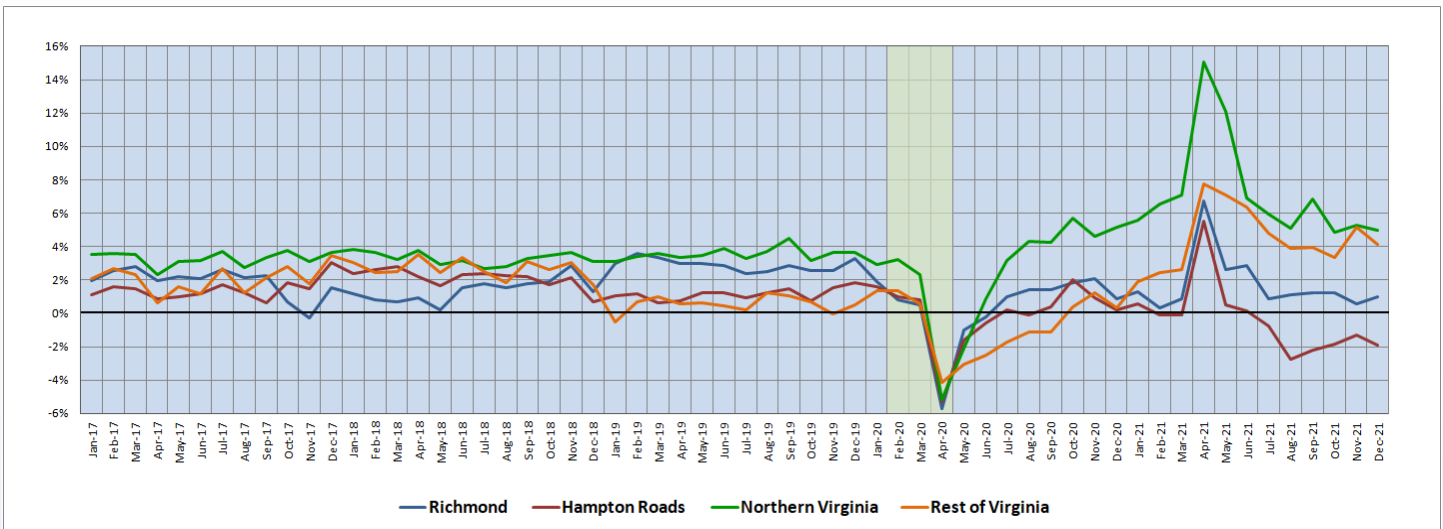
Although Northern Virginia and the Rest of Virginia continue to enjoy the highest year-over-year HC&SA employment growth rates in the state, both of these growth rates fell in December. Northern Virginia saw its year-over-year HC&SA employment growth rate decline from 4.59% to 4.26% in December, while the Rest of Virginia experienced a more significant decline to its comparable growth rate from 4.58% to 3.39% during the month. Hampton Roads also experienced a decline to its growth rate, which fell from -2.05% to -2.71%. On the other hand, Richmond’s HC&SA sector saw its year-over-year employment growth rate rebound in December from 0.00% to 0.48%.

**Figure 2: Year-Over-Year Employment Growth (Not Seasonally Adjusted).**



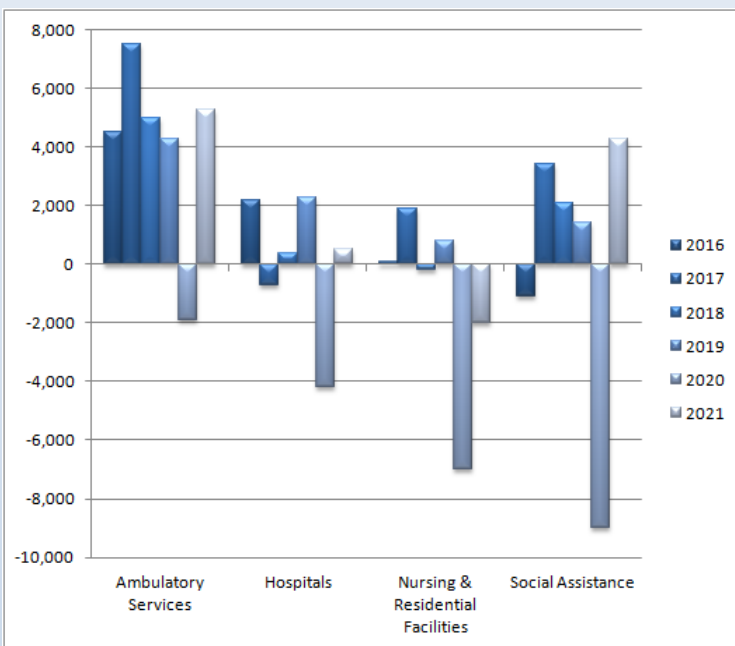
## 12-Month Average Employment Growth by Region

**Figure 3: 12-Month Moving Average, HC&SA Regional Employment Growth Rate (Not Seasonally Adjusted).**



In November, Richmond’s 12-month HC&SA employment growth rate moving average fell below 1% for the first time since July. However, this moving average rebounded back above 1% in December with an increase from 0.54% to 1.01% during the month. On the other hand, the comparable moving averages for Virginia’s three other regions all declined in December. Northern Virginia’s HC&SA sector experienced the smallest decline as its 12-month employment growth rate moving average fell from 5.27% to 4.95%. At the same time, the Rest of Virginia saw its 12-month HC&SA employment growth rate moving average decline from 5.13% to 4.11%. Finally, Hampton Roads experienced a decline in its 12-month HC&SA employment growth rate moving average from -1.32% to -1.92%.

## Subsector Employment Growth



**Figure 4: Annual & YTD Change in HC&SA Subsector Employment (Not Seasonally Adjusted, Full-Year Change for 2016-2020, Year-to-Date Change for 2021).**

In December, all four HC&SA subsectors in the state lost jobs. In addition, three of these HC&SA subsectors experienced job losses that exceeded their gains from November. The largest employment decline occurred in Hospitals. This HC&SA subsector lost 1,000 jobs in December. This result represents the largest monthly job loss in Hospitals since April 2020. At the same time, Social Assistance lost 900 jobs, while Ambulatory Health Care Services saw employment decline by 800. Finally, Nursing & Residential Care Facilities experienced the smallest decline in December with the loss of 200 jobs.

Ambulatory Health Care Services rebounded strongly in 2021. After losing 1,900 jobs in 2020, this HC&SA subsector added 5,300 jobs in 2021. Social Assistance also enjoyed strong employment growth in 2021 with the creation of 4,300 jobs. Hospitals experience more modest growth in 2021 with the addition of 500 jobs. As for Nursing & Residential Care Facilities, this HC&SA subsector lost an additional 2,000 jobs in 2021 after losing 7,000 jobs in 2020.

### Distribution of Growth by Subsector

Not Seasonally Adjusted	Employment, in Thousands				Growth Rate, Annualized		
	Dec. 2020	Sept. 2021	Nov. 2021	Dec. 2021	12 Month	3 Month	1 Month
<b>Virginia</b>							
Health Care & Social Assistance	442.1	446.9	453.1	450.2	1.8%	3.0%	-7.4%
<i>Ambulatory Health Care Services</i>	191.1	194.9	197.2	196.4	2.8%	3.1%	-4.8%
<i>Hospitals</i>	104.2	105.5	105.7	104.7	0.5%	-3.0%	-10.8%
<i>Nursing &amp; Residential Care Facilities</i>	71.8	68.8	70.0	69.8	-2.8%	5.9%	-3.4%
<i>Social Assistance</i>	75.0	77.7	80.2	79.3	5.7%	8.5%	-12.7%
<b>Hampton Roads</b>							
Health Care & Social Assistance	92.1	88.7	90.8	89.6	-2.7%	4.1%	-14.8%
<i>Hospitals</i>	21.3	21.4	21.6	21.4	0.5%	0.0%	-10.6%
<b>Northern Virginia</b>							
Health Care & Social Assistance	133.7	139.6	139.1	139.4	4.3%	-0.6%	2.6%
<i>Ambulatory Health Care Services</i>	67.8	71.2	71.2	71.1	4.9%	-0.6%	-1.7%
<i>Hospitals</i>	26.1	26.4	26.4	26.4	1.1%	0.0%	0.0%

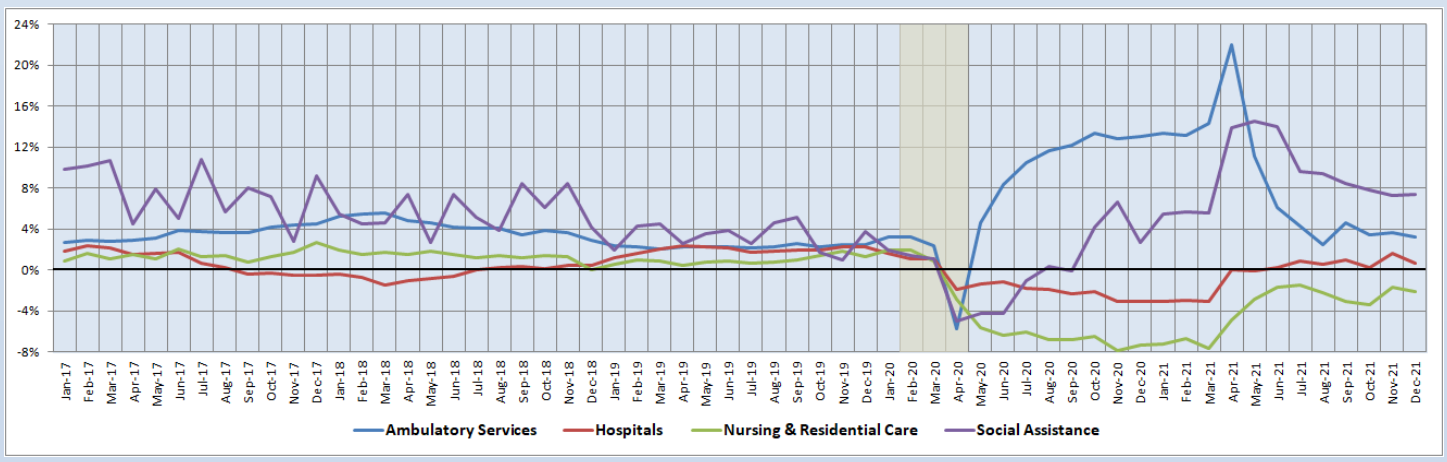
Preliminary estimates are italicized

Although every HC&SA subsector experienced negative employment growth in December, three of these HC&SA subsectors, Social Assistance, Nursing & Residential Care Facilities, and Ambulatory Health Care Services, are still enjoying strong three-month annualized employment growth rates of 8.5%, 5.9%, and 3.1%, respectively. All three of these growth rates exceed the comparable 3.0% growth rate for Virginia’s HC&SA sector as a whole. In addition, two of these HC&SA subsectors, Social Assistance and Ambulatory Health Care Services, are also experiencing strong long-term employment growth. Over the past year, employment in these two HC&SA subsectors has grown by 5.7% and 2.8%, respectively.

### 12-Month Average Employment Growth by Subsector

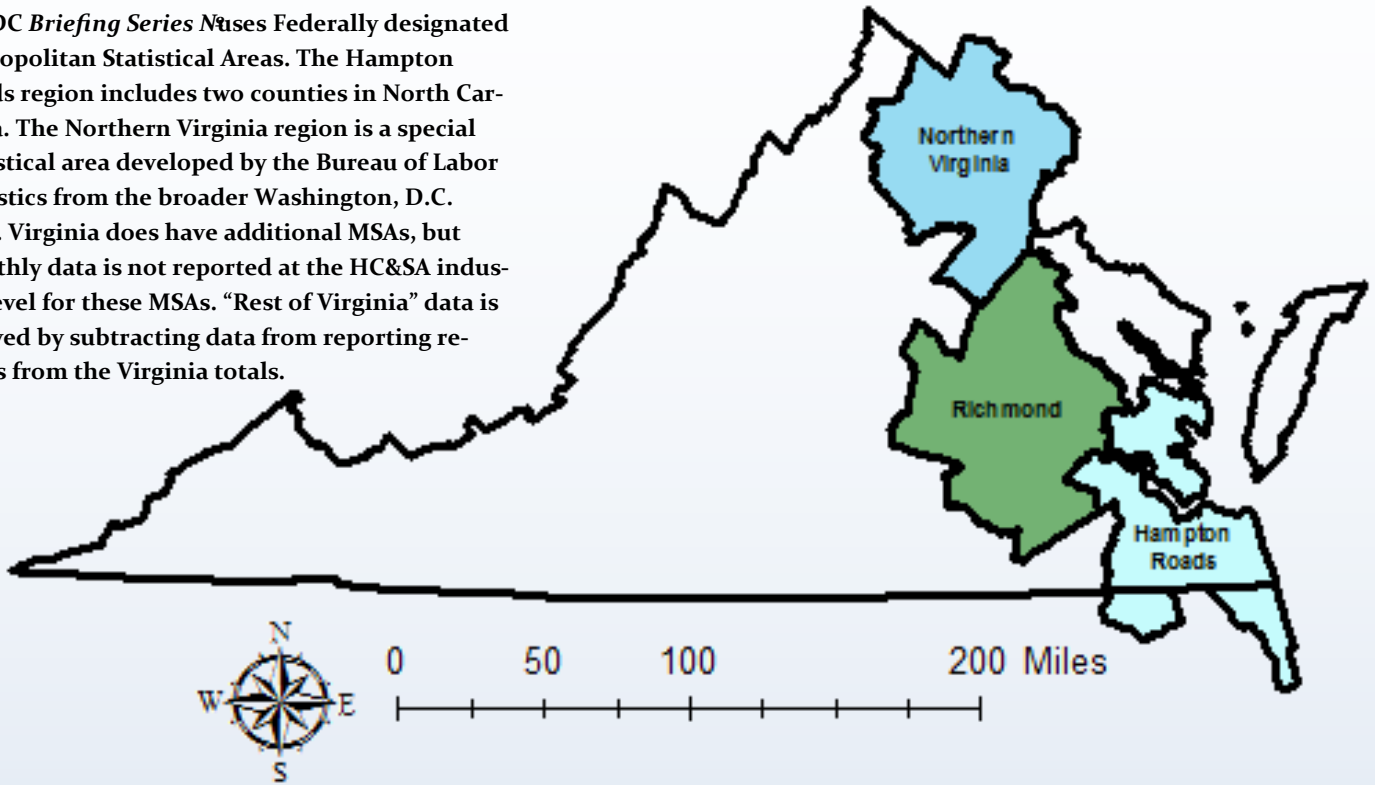
In December, Social Assistance experienced a small uptick to its 12-month employment growth rate moving average, which increased from 7.33% to 7.39%. On the other hand, Virginia’s three other HC&SA subsectors all saw their comparable moving averages decline during the month. Ambulatory Health Care Services saw their 12-month employment growth rate moving average decline from 3.66% to 3.21%, thereby falling to its lowest value since August. At the same time, the comparable moving average for Hospitals was cut by more than half in December from 1.58% to 0.68%. Finally, Nursing & Residential Care Facilities saw its own 12-month employment growth rate moving average fall from -1.64% to -2.06%.

**Figure 5: 12-Month Moving Average, HC&SA Subsector Employment Growth Rate (Not Seasonally Adjusted).**



### Region Map

HWDC *Briefing Series* Uses Federally designated Metropolitan Statistical Areas. The Hampton Roads region includes two counties in North Carolina. The Northern Virginia region is a special statistical area developed by the Bureau of Labor Statistics from the broader Washington, D.C. MSA. Virginia does have additional MSAs, but monthly data is not reported at the HC&SA industry level for these MSAs. “Rest of Virginia” data is derived by subtracting data from reporting regions from the Virginia totals.



### Region Detail

Northern Virginia		Richmond		Hampton Roads	
<i>Northern VA, (Non-standard CES Area 94783)</i>		<i>Richmond, VA (MSA 40060)</i>		<i>Virginia Beach-Norfolk-Newport News, VA-NC (MSA 47260)</i>	
<b>Counties:</b>	<b>Cities:</b>	<b>Counties:</b>	<b>Cities:</b>	<b>Counties:</b>	<b>Cities:</b>
Arlington	Alexandria	Amelia	Colonial Heights	Gloucester	Chesapeake
Clarke	Fairfax	Caroline	Hopewell	Isle of Wight	Hampton
Culpeper	Falls Church	Charles City	Petersburg	James City	Newport News
Fairfax	Fredericksburg	Chesterfield	Richmond	Mathews	Norfolk
Fauquier	Manassas	Dinwiddie		Surry	Poquoson
Loudoun	Manassas Park	Goochland		York	Portsmouth
Prince William		Hanover			Suffolk
Rappahannock		Henrico		<i>Currituck, NC</i>	Virginia Beach
Spotsylvania		King William		<i>Gates, NC</i>	Williamsburg
Stafford		New Kent			
Warren		Powhatan			
		Prince George			
		Sussex			



Healthcare Workforce  
Data Center

Perimeter Center  
9960 Mayland Drive, Suite 300  
Henrico, VA 23233-1463

Phone: (804) 597-4213  
Fax: (804) 527-4434  
E-mail: [hwdc@dhp.virginia.gov](mailto:hwdc@dhp.virginia.gov)  
Website: [www.dhp.virginia.gov/PublicResources/HealthcareWorkforceDataCenter](http://www.dhp.virginia.gov/PublicResources/HealthcareWorkforceDataCenter)

*HWDC Staff:*

Elizabeth Carter, PhD <i>Executive Director</i>	Yetty Shobo, PhD <i>Deputy Director</i>
Rajana Siva, MBA <i>Data Analyst</i>	Christopher Coyle <i>Research Assistant</i>

The Department of Health Professions Healthcare Workforce Data Center works to improve the data collection and measurement of Virginia's healthcare workforce through regular assessment of workforce supply and demand issues among the 80 professions and 350,000 practitioners licensed in Virginia by DHP.

The HWDC collects data on Virginia's licensed health professionals through surveys completed during the online license renewal and application process. Survey results and data may be accessed on our website: [www.dhp.virginia.gov/PublicResources/HealthcareWorkforceDataCenter/](http://www.dhp.virginia.gov/PublicResources/HealthcareWorkforceDataCenter/).

The HWDC also provides a series of Virginia Healthcare Workforce Briefs based data collected by the U.S. Department of Labor's Bureau of Labor Statistics and the U.S. Department of Commerce' Bureau of Economic Analysis.

Virginia Healthcare Workforce Briefs:

Series 1: State & National Employment (Monthly)

Series 2: Virginia Regional Employment (Monthly)

Series 3: Income & Compensation (Quarterly)

Follow us on. . .

Tumblr: <http://vahwdc.tumblr.com/>

### About the Data

Data in this report are from the U.S. Department of Labor Bureau of Labor Statistics' Current Employment Statistics program. The CES program surveys about 143,000 businesses and government agencies monthly. Unless otherwise noted, this series uses data that are not seasonally adjusted. Seasonal variations related to weather, holidays, weekends, seasons and other predictable variations are apparent in the data. Short-term changes may be related to seasonal changes rather than underlying trends. Data from recent months is preliminary and subject to revision in future releases from the CES. Revisions will be reported in future editions of this series. Unless otherwise noted, the CES data presented in this series:

#### **Includes:**

- ◆ Data on employed individuals drawing a paycheck (payroll employees).
- ◆ All employees, regardless of role, occupation or hours worked.
- ◆ HC&SA employees in the private sector only.
- ◆ Persons employed by health professionals in private practice.
- ◆ Both government and private sector workers in nonfarm employment data.

#### **Does not include:**

- ◆ Self-employed workers or volunteers, including health professionals in private practice.
- ◆ HC&SA employees in the public sector. (These are counted as government workers in monthly reports).
- ◆ Information on hours worked or the quality of employment.
- ◆ Government workers in HC&SA level data. (Government workers, regardless of occupation and role, are classified as public sector employees).